



ABHD4 Polyclonal Antibody

Catalog No	YP-Ab-02456
Isotype	IgG
Reactivity	Human;Mouse
Applications	IHC;IF;ELISA
Gene Name	ABHD4
Protein Name	Abhydrolase domain-containing protein 4
Immunogen	The antiserum was produced against synthesized peptide derived from human ABHD4. AA range:251-300
Specificity	ABHD4 Polyclonal Antibody detects endogenous levels of ABHD4 protein.
Formulation	Liquid in PBS containing 50% glycerol, 0.5% BSA and 0.02% sodium azide.
Source	Polyclonal, Rabbit,IgG
Purification	The antibody was affinity-purified from rabbit antiserum by affinity-chromatography using epitope-specific immunogen.
Dilution	IHC: 1/100 - 1/300. ELISA: 1/20000.. IF 1:50-200
Concentration	1 mg/ml
Purity	≥90%
Storage Stability	-20°C/1 year
Synonyms	ABHD4; Abhydrolase domain-containing protein 4; Alpha/beta-hydrolase 4; Lyso-N-acylphosphatidylethanolamine lipase
Observed Band	
Cell Pathway	endoplasmic reticulum membrane,lipid particle,
Tissue Specificity	Cervix,
Function	caution:Thr-291 is present instead of the conserved His which is expected to be an active site residue.,function:Lysophospholipase selective for N-acyl phosphatidylethanolamine (NAPE). Contributes to the biosynthesis of N-acyl ethanolamines, including the endocannabinoid anandamide by hydrolyzing the sn-1 and sn-2 acyl chains from N-acyl phosphatidylethanolamine (NAPE) generating glycerophospho-N-acyl ethanolamine (GP-NAE), an intermediate for N-acyl ethanolamine biosynthesis. Hydrolyzes substrates bearing saturated, monounsaturated, polyunsaturated N-acyl chains. Shows no significant activity towards other lysophospholipids, including lysophosphatidylcholine, lysophosphatidylethanolamine and lysophosphatidylserine.,similarity:Belongs to the peptidase S33 family. ABHD4/ABHD5 subfamily.,
Background	caution:Thr-291 is present instead of the conserved His which is expected to be an active site residue.,function:Lysophospholipase selective for N-acyl phosphatidylethanolamine (NAPE). Contributes to the biosynthesis of N-acyl



ethanolamines, including the endocannabinoid anandamide by hydrolyzing the sn-1 and sn-2 acyl chains from N-acyl phosphatidylethanolamine (NAPE) generating glycerophospho-N-acyl ethanolamine (GP-NAE), an intermediate for N-acyl ethanolamine biosynthesis. Hydrolyzes substrates bearing saturated, monounsaturated, polyunsaturated N-acyl chains. Shows no significant activity towards other lysophospholipids, including lysophosphatidylcholine, lysophosphatidylethanolamine and lysophosphatidylserine.,similarity:Belongs to the peptidase S33 family. ABHD4/ABHD5 subfamily.,

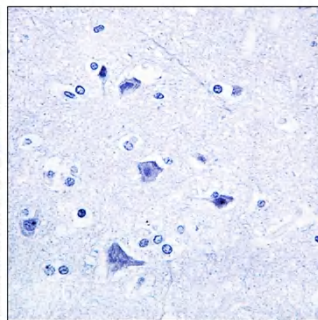
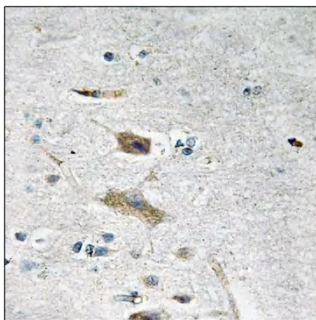
matters needing attention

Avoid repeated freezing and thawing!

Usage suggestions

This product can be used in immunological reaction related experiments. For more information, please consult technical personnel.

Products Images



Immunohistochemistry analysis of paraffin-embedded human brain tissue, using ABHD4 Antibody. The picture on the right is blocked with the synthesized peptide.